

BACKSHELL KIT INCLUDES:

- (2) BACKSHELL HALVES
- (2) 4-40 MATING SCREWS
- (2) STRAIN RELIEF CLAMPS
- (2) STRAIN RELIEF SCREWS
- (1) CABLE SLOT SHUT-OFF
- (3) HOUSING SCREWS

SERIES _____

POSITIONS _____

009

015

025

037

050

MATERIAL _____

010 = PLASTIC

020 = METALIZED PLASTIC

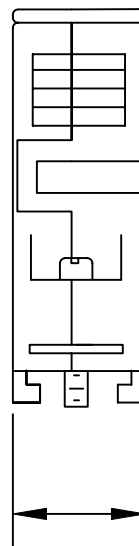
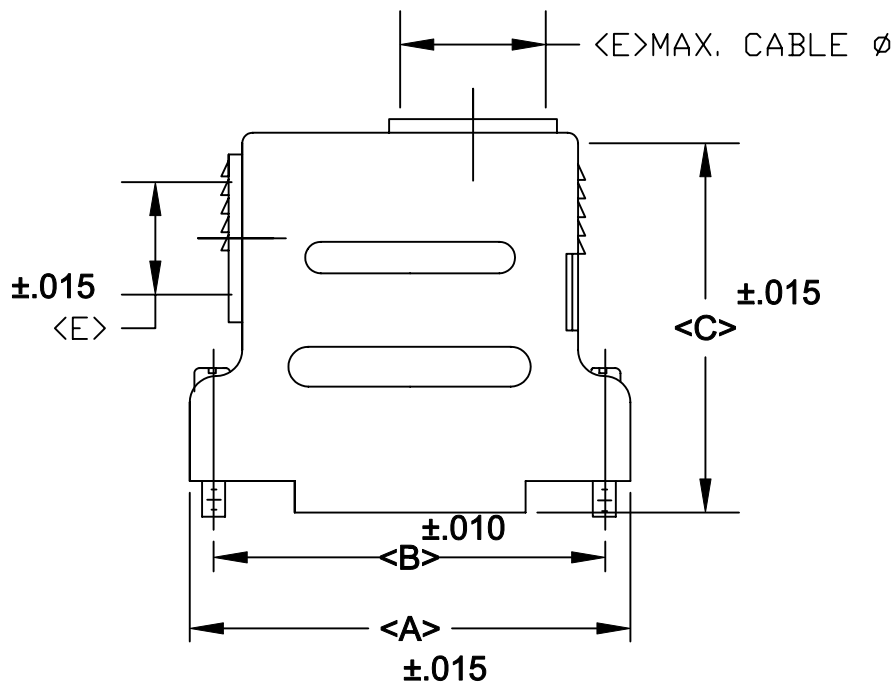
COLOR: _____

03 = GREY

12 = NICKEL OVER COPPER

PUT-UPS _____

1 = KIT



NOTE: 9 POSITION DOES NOT HAVE 90 DEGREE ENTRY AND HAS ONLY (1) STRAIN RELIEF CLAMP.

POS.	A	B	C	D	E
9	1.230	.984	1.380	.630	.350
	31.24	24.99	35.05	16.00	8.89
15	1.560	1.312	1.610	.630	.374
	39.62	33.32	40.89	16.00	9.50
25	2.100	1.852	1.810	.630	.444
	53.34	47.04	45.97	16.00	11.18
37	2.740	2.500	1.810	.630	.444
	69.60	63.50	45.97	16.00	11.18
50	2.650	2.406	1.810	.735	.543
	67.31	61.00	45.97	18.67	13.79

MATERIALS: THERMOPLASTIC
U.L.94V-0 (GREY)
OPERATING TEMP: -55° TO 140° C
METALIZED PLASTIC: NICKEL OVER COPPER

RoHS COMPLAINT



THESE DRAWINGS AND SPECIFICATIONS ARE THE PROPERTY OF NorComp AND SHALL NOT BE REPRODUCED, COPIED OR USED AS THE BASIS FOR THE MANUFACTURE OR SALE OF APPARATUS WITHOUT WRITTEN PERMISSION.

DRAWN: **PAM JENKINS**

DATE: **3-8-06**

CHECKED:

DATE:

NorComp

SCALE _____ SHEET **1** OF **1** REV **3**

DWG NO. **982-YYY-0Y0RYY1**